

AT A GLANCE

FEATURES

- Compact cylinder design
- HC4460 - 6.25" stroke
- HC4461 - 6.0" stroke
- Optional Tilt helm available
- Helm fits standard 3" dash cut outs
- Fast easy installation



BAYSTAR INBOARD STEERING SYSTEM

Built in the same tradition as SeaStar Inboard Steering, these BayStar Systems are designed for relatively low torque inboard applications, including inland waterway boats and other low speed displacement vessels.*

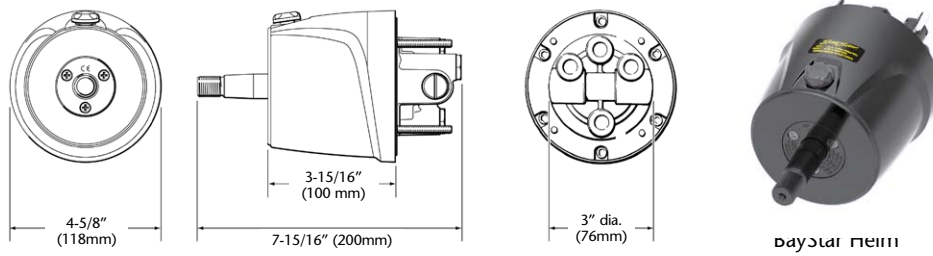
The systems are easy to install with "cut-to-length" tubing. Available in complete kits or by individual components. For detailed application information go to www.teleflexmarine.com.

SPECIFICATIONS

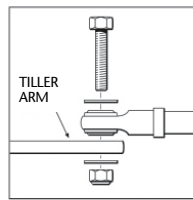
| ORDER INFORMATION | PART NO. |
|--|----------|
| BayStar 30kg/m (2600 in/lbs) Inboard cylinder | HC4461 |
| BayStar 52kg/m (4500 in/lbs) Inboard cylinder | HC4460H |
| BayStar Helm 1.4cu" | HH4314 |
| BayStar 20ft tubing kit | HT4420 |
| 1 Litre Oil | HA5430 |
| BayStar Sport Tilt Helm | HH4315 |
| BayStar Mounting Kit | HA5476 |
| BayStar 30kg/m (2600 in/lbs) Inboard Steering Kit (comprising: HH4314 helm + HC4461 cylinder + HT4420 tubing kit + 2 x HA5430 oil) | HK4401 |
| BayStar 52kg/m (4500 in/lbs) Inboard Steering Kit (comprising HH4314 helm + HC4460 cylinder + HT4420 tubing kit + 2 x HA5430 oil) | HK4400H |

*If unsure of total steering loads, contact Teleflex Technical Support for assistance.

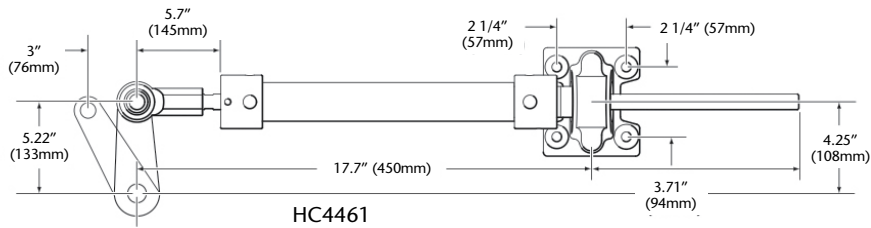




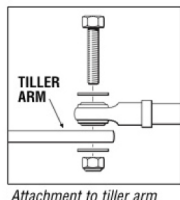
ΒΑΥΣΤΑΡ ΠΕΡΙΠΛ



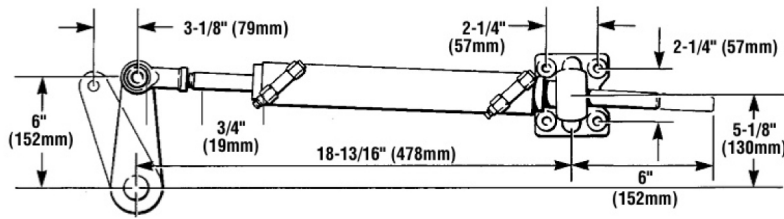
Attachment to tiller arm



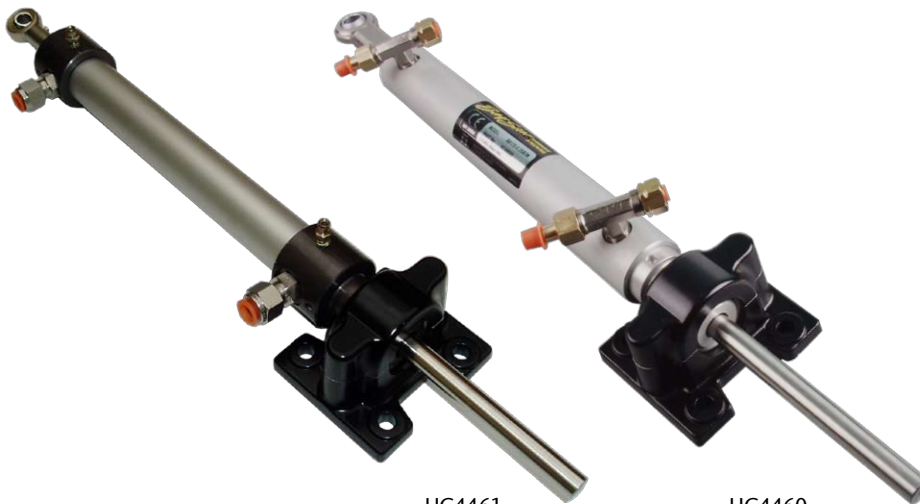
HC4461



Attachment to tiller arm



HC4460H



HC4461

HC4460

