

CH1752P Pictured

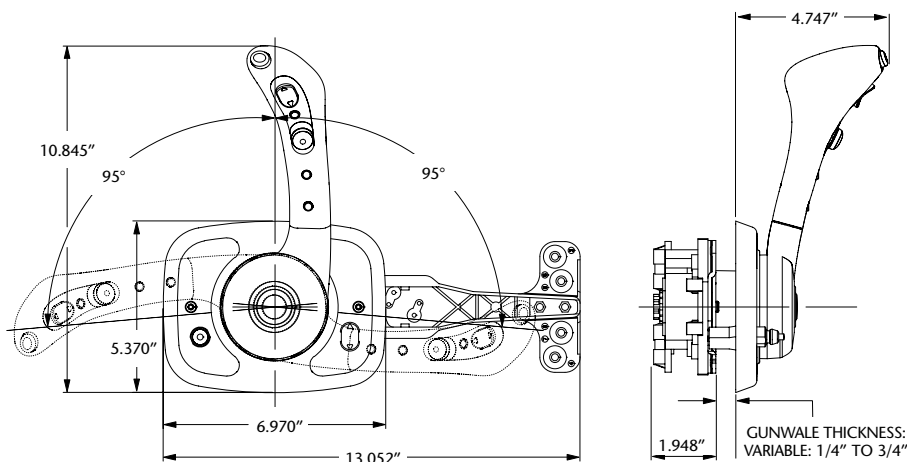


OSPREY SERIES CH1700 SIDE MOUNT CONTROL

TECHNICAL DATA

The ergonomics and features of our CH1700 controls are advanced beyond those of any other control on the market. A shapely, balanced handle design provides an incredibly smooth yet positive feel, neutral interlock, throttle warm-up, and start-in-gear protection features are standard on all CH1700 models, with power trim/tilt, emergency cut off switches offered as an option. In addition the cosmetics of these controls can be configured to suit many tastes. For a starboard gunwale mount control.

CH1700 controls are suitable for use both universal (3300 type) or OEM type control cables without adaptation.



ISSUE DATE OCT-09
DATA SHEET NO USA-MC(DA)2

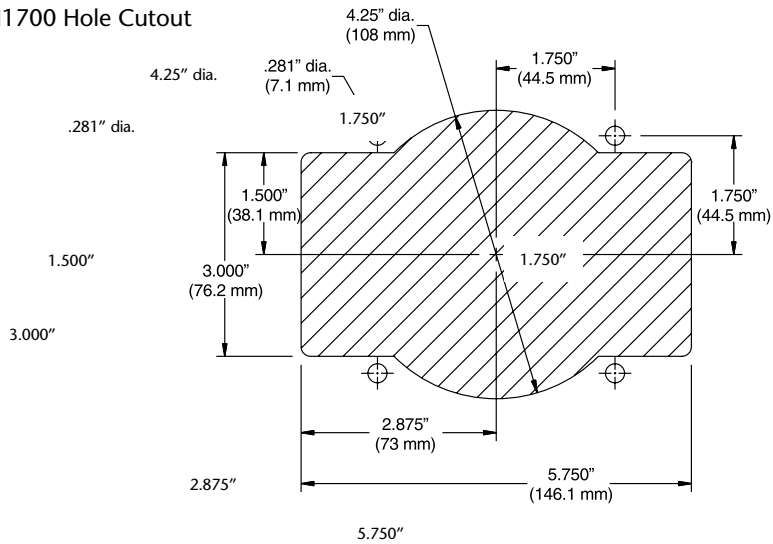
AT A GLANCE

FEATURES

- All controls include start in gear protection
- Designed for use with both universal and OEM shift and throttle cables
- Suitable for most single engine, single station boats
- Dual action lever (throttle and shift control on one handle)
- Neutral Interlock standard on all CH1700 controls
- Trim, Tilt, options available
- All controls include cut off switch (inboard and outboard versions)
- Drag adjustment on all models
- Easy installation and set up
- Neutral "warm up" button for throttle only operation

PAGE 1 OF 2

CH1700 Hole Cutout



SPECIFICATIONS

ENGINE CONTROLS	PRODUCT NUMBER
Side Mount, Chrome Handle, Black Cover, Chrome and Black Inserts, I/O and O/B stop switch	CH1750P
Side Mount, Chrome Handle, Black Cover, Chrome and Black Inserts with trim, I/O and O/B stop switch	CH1751P
Side Mount, Chrome Handle, Black Cover, Chrome and Black Inserts with trim & tilt, I/O and O/B stop switch	CH1752P
SERVICE ITEMS	PRODUCT NUMBER
Insert Kit-CH1700-Black	7213111
Insert Kit CH1700-Chrome	7213017
Neutral Warm-up Button Kit-CH1700	7213214
Tilt Switch-CH1700-w/Chrome & Black Insert Kit	7206215
Outboard Cutoff Switch-CH1700 with Chrome & Black Insert Kit	7206212
Stern Drive (I/O) and Inboard Cutoff Switch-CH1700 with Chrome & Black Insert Kit	7206211
Cable Nest And Connection Kit	212151-003

ISSUE DATE OCT-09

DATA SHEET NO USA-MC(DA)2

PAGE 2 OF 2

