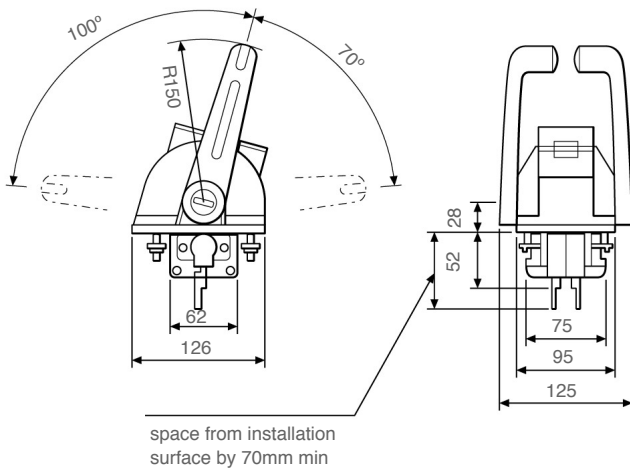


KE-5/6 Electronic control systems

Technical Data



Twin control head



KE-5/6 Electronic controls

KE-5/6 electronic controls continue the high standards set by the popular KE4 control system. Modern styling, various colour/finish control head options, single or twin engine versions.

KE5 - Suitable for full electronic engine/gearbox combinations.

KE6 - Suitable for electronic throttle and mechanical gearboxes

Key Features

- Easy installation
- single-lever dual function control
- KE5 Up to 5 stations. KE6 Up to 4 stations
- Control head with Built-in station select switch
- Easy station transfer
- Neutral warm-up provision
- Self diagnosis system
- Fail safe operation
- Plug in connectors
- Visual system failure alarm (audio optional)
- Trolling system option available (current output only)
- Hand held control option available
- Engine synchronisation option available

KE5 Control system	
Supply Voltage	DC9~31V
Current Consumption	Control Unit - 1.0A Max
Throttle Output PWM	Current (4mA-20mA) or Voltage (0V-4.5V)
Shift Output	Forward Switch (N.O.) and Reverse Switch (N.O.)
Operating Environment	-20°C to +75°C

KE6 Control system	
Supply Voltage	12VDC or 24 VDC
Current Consumption	Control Unit - 0.5A Max
Shift	Mechanical Output Starting Current-Motor-16A Max at 49N(5 Kgf) Load Driving Current-Motor-7A Max at 49N(5 Kgf) Load
Throttle Electric Output PWM	Current (4mA-20mA) or Voltage (0V-4.5V)
Operating Environment	-20°C to +75°C

contact us for more details:

8.15 - 16.30 (mon-fri)

Tel: +44 (0)1202 885212

Fax: +44 (0)1202 885214

e-mail: intmarine@teleflex.com

Teleflex Marine International Sales & Marketing

Gaunts Business Centre,

Gaunts Common,

Wimborne,

Dorset BH21 4JT

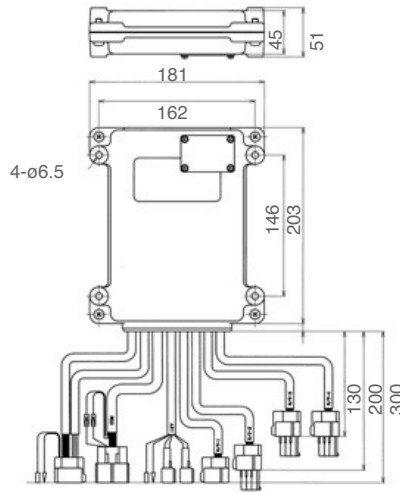
England

KE-5 Electronic control system

Technical Data



Hand held control option



KE5 Main control unit

KE5		Part No.	Required										Note		
			Single Engine					Twin Engine							
			1st	2nd	3rd	4th	5th	1st	2nd	3rd	4th	5th			
Description															
Control Head		NM0511-00	1	2	3	4	5	-	-	-	-	-	-		
		NM0510-00	-	-	-	-		1	2	3	4	5			
Control Unit		NM0492-00	1	1	1	1	1	2	2	2	2	2			
Communication Harness	5m	NM0619-05	-	-	-	-	-	1	1	1	1	1			
Harness Remote Control	XXm	NM0616-XX	1	2	3	4	5	2	4	6	8	10		Available every 2m between 4 to 50m (-04 is 4m harness)	
Harness Shift/Throttle	Type 1 5m	NM0626-05	1	1	1	1	1	2	2	2	2	2		For Current	
	Type 2 5m	NM0625-05												For Voltage output	
	Type 3 5m	NM0631-05												For PWM output	
Harness Power supply	5m	NM0414-28	2	2	2	2	2	4	4	4	4	4			
	10m	NM0414-33													
Circuit Breaker	10A	NJ0595-00	2	2	2	2	2	4	4	4	4	4		Option	
Buzzer	24V	NJ0515-00	1	2	3	4	5	2	4	6	8	10		Option	
	12V	NJ0251-00													
Hand Held Control	Consult your dealer for details											Option			

Note: Select - Harness Shift/Throttle depend on the type of throttle output
 Engine compatibility Type 1 MAN, MTU
 Type 2 Cummins, detroit Diesel, Scania
 Type 3 Caterpillar

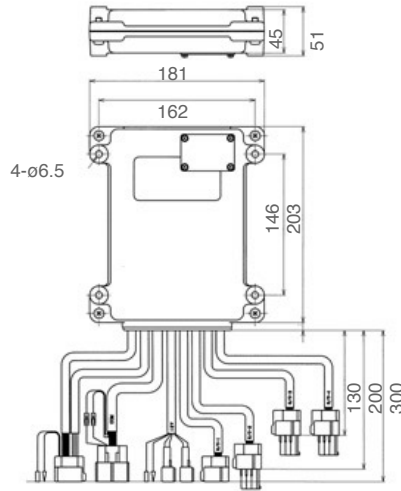
<p>contact us for more details:</p> <p>8.15 - 16.30 (mon-fri)</p> <p>Tel: +44 (0)1202 885212</p> <p>Fax: +44 (0)1202 885214</p> <p>e-mail: intmarine@teleflex.com</p>	<p>Teleflex Marine International Sales & Marketing</p> <p>Gaunts Business Centre,</p> <p>Gaunts Common,</p> <p>Wimborne,</p> <p>Dorset BH21 4JT</p> <p>England</p>
---	--

KE-6 Electronic control system

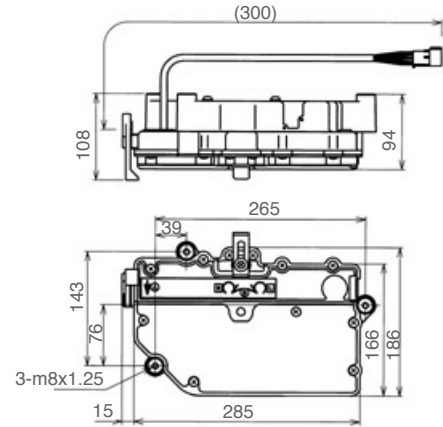
Technical Data



Hand held control option



KE6 Main control unit



KE6 actuator unit

KE6		Part No.	Required								Note	
			Single Engine				Twin Engine					
Description			1st	2nd	3rd	4th	1st	2nd	3rd	4th		
Control Head		NM0511-00	1	2	3	4	-	-	-	-		
		NM0510-00	-	-	-	-	1	2	3	4		
Control Unit	12V	NM1401-00	1	1	1	1	2	2	2	2		
	24V	NM1402-00										
Communication Harness		5m	NM0619-05	-	-	-	-	1	1	1	1	
Harness Remote Control		XXm	NM0616-XX	1	2	3	4	2	4	6	8	Available every 2m between 4 to 50m (-04 is 4m harness)
Harness Shift Act./ Throttle		Type 1 5m	NM0630-05	1	1	1	1	2	2	2	2	For Current
		Type 2 5m	NM0629-05									For Voltage output
		Type 3 5m	NM0632-05									For PWM output
Harness Power supply		5m	NM0414-28	2	2	2	2	4	4	4	4	
		10m	NM0414-33									
Shift Actuator			NM0172-00	1	1	1	2	2	2	2	2	Option
Sync Switch			NJ0524-00	-	-	-	-	1	1	1	1	Option
Sync Master Harness			NM0605-01	-	-	-	-	1	1	1	1	Option
Sync Slave Harness			NM0605-02	-	-	-	-	1	1	1	1	Option

Note: Select - Harness Shift Act./Throttle depend on the type of throttle output

Engine compatibility Type 1 MAN, MTU
 Type 2 Cummins, detroit Diesel, Scania
 Type 3 Caterpillar

contact us for more details: **Teleflex Marine International Sales & Marketing**
 8.15 - 16.30 (mon-fri) Gaunts Business Centre,
 Tel: +44 (0)1202 885212 Gaunts Common,
 Fax: +44 (0)1202 885214 Wimborne,
 e-mail: intmarine@teleflex.com Dorset BH21 4JT
 England