

KE-4 Electronic control system

Technical Data

KE-4 Electronic control

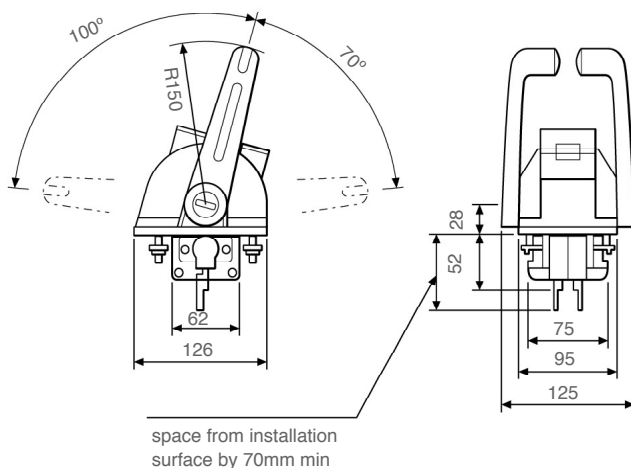


The TeleflexMorse KE-4 is a perfect answer to smooth and easy shift and throttle control suitable for most applications.

Modern styling, various colour/finish control head options, single or twin engine versions. Designed specifically to meet the performance, reliability endurance and aesthetic requirements of today's modern boats.

Key Features

- Designed for new installation or retrofit
- A new level of control performance for inboard, outboard (single or twin) or stern-drive engines; gas or diesel, 12VDC or 24VDC systems
- Up to 4 stations
- Various colour/finish control head options.
- Synchronisation option
- Single lever- dual function or *single function versions available
- Neutral warm up function
- Complete self-diagnostic system
- Optional mechanical backup
- Adjustable shift pause and throttle delay
- Shift in gear protection
- Optional trolling system
- Remote hand held docking accessory
- Maximum work load 343N (35 Kgf)
- Output load 45kgf (shift) - 35kgf (throttle and trolling)
- Output speed 50mm per second
- Rated input voltages 12V DC or 24 VC available
- Current consumption 0.5A Max (control unit)
- Starting current - motor 16A Max at 49N (5 Kgf)
- Driving current - motor 7A Max at 49N (5 Kgf)
- Throttle travel 80mm Max-adjustable
- Shift travel 40mm Max each (Fwd, Rev) -adjustable
- Operating environment -68°F/-20°C to +167°F/+75°C



Twin control head

*Contact TeleflexMorse for details

page 1 of 3

contact us for more details:

8.15 - 16.30 (mon-fri)

Tel: +44 (0)1202 885212

Fax: +44 (0)1202 885214

e-mail: office@tfmarine.co.uk

TeleflexMorse International Sales & Marketing

Gaunts Business Centre,

Gaunts Common,

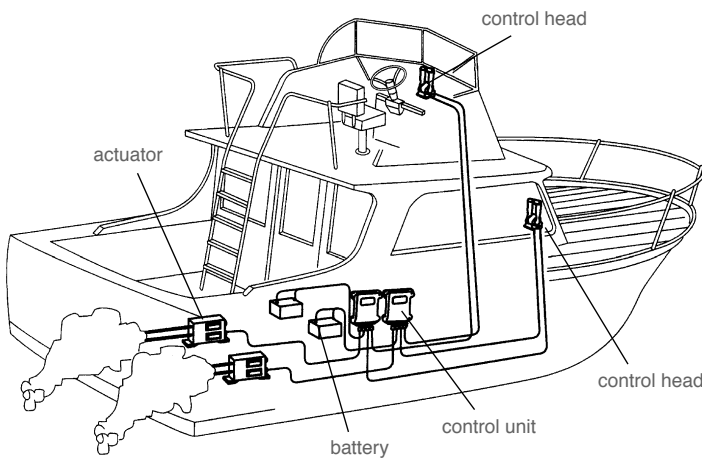
Wimborne,

Dorset BH21 4JT

England

KE-4 Electronic control system

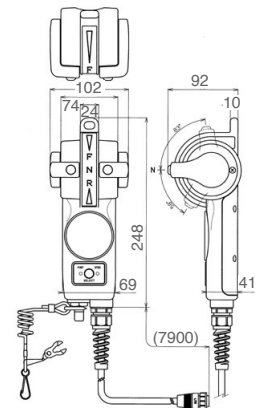
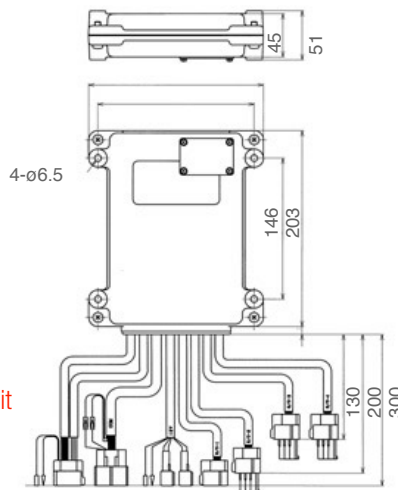
Technical Data



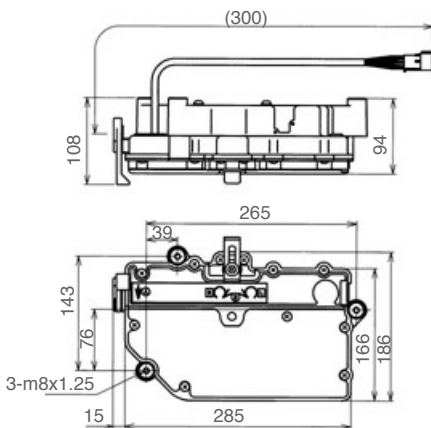
Hand held control



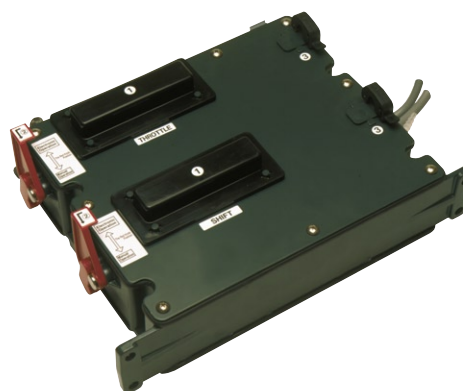
Main control unit



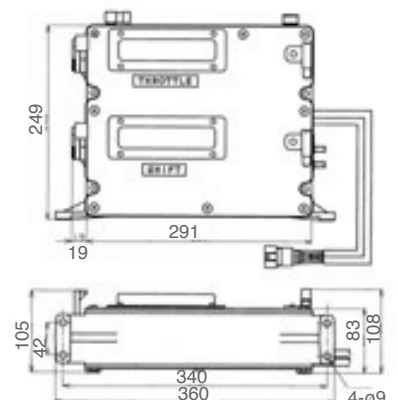
Hand held control



Trolling actuator unit



Shift & throttle actuator unit



contact us for more details:

8.15 - 16.30 (mon-fri)

Tel: +44 (0)1202 885212

Fax: +44 (0)1202 885214

e-mail: office@tfxmarine.co.uk

TeleflexMorse International Sales & Marketing

Gaunts Business Centre,

Gaunts Common,

Wimborne,

Dorset BH21 4JT

England

KE-4 Electronic control system

Technical Data

Name	Part No.	Required								Note	
		Single Engine				Twin Engine					
		1st	2nd	3rd	4th	1st	2nd	3rd	4th		
Control Head	NM0511-00	1	2	3	4	-	-	-	-		
	NM0510-00	-	-	-	-	1	2	3	4		
Control Unit	24V	NM0478-00	1	1	1	1	2	2	2	2	
	12V	NM0477-00									
Actuator		NM0165-00	1	1	1	1	2	2	2	2	
Communication Harness		NM0619-05	-	-	-	-	1	1	1	1	
Harness Remote Control	XXm	NM0616-XX	1	2	3	4	2	4	6	8	Available every 2m between 4 to 50m (-04 is 4m harness)
Harness Power Supply	5m	NM0414-28	2	2	2	2	4	4	4	4	
	10m	NM0414-33									
Circuit Breaker	20A	NJ0514-00	2	2	2	2	4	4	4	4	Option
Buzzer	24V	NJ0515-00	1	2	3	4	2	4	6	8	Option
	12V	NJ0251-00									
Cable			2	2	2	2	4	4	4	4	33C, 33C Supreme
Mechanical Control Head			1	1	1	1	2	2	2	2	Option
Cable (Manual Operation)			2	2	2	2	4	4	4	4	Option

contact us for more details: [TeleflexMorse International Sales & Marketing](mailto:office@tfmarine.co.uk)

8.15 - 16.30 (mon-fri)

Tel: +44 (0)1202 885212

Fax: +44 (0)1202 885214

e-mail: office@tfmarine.co.uk

Gaunts Business Centre,

Gaunts Common,

Wimborne,

Dorset BH21 4JT

England