

Model 6524 Electronic Actuator



This actuator was designed to actuate such items as marine clutches, throttles trolling valves, controllable pitch propeller mechanisms and various shipboard and industrial applications. The revolutionary design (patent pending) allows for easy installation and adjustment.

The output lever has an internal resilient link which allows the items to be controlled to be over-stroked without causing any harm to the drive train and motor. This is extremely useful if there is wear in the mechanical linkage between our actuator and the item to be controlled. The potentiometers and all wiring are easily accessible under the side covers. An inspection door is also provided to inspect the drive train.

Specifications

Travel

1. 1.940"
2. 2.470"
3. 3.010"
4. 3.540"

Weight

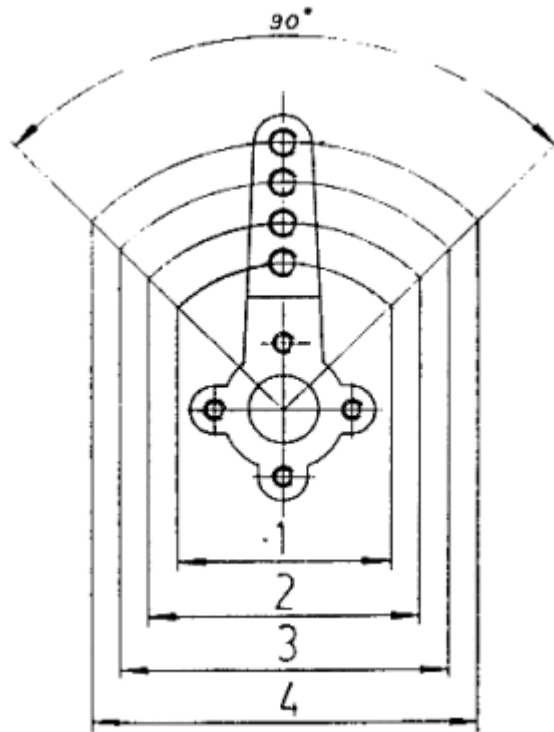
25lbs./11.5 KG

Maximum Torque

90in./lbs.

We highly recommend the use of Felsted 43 series cable between our actuator and the item to be controlled.

Model 6524 Electronic Actuator

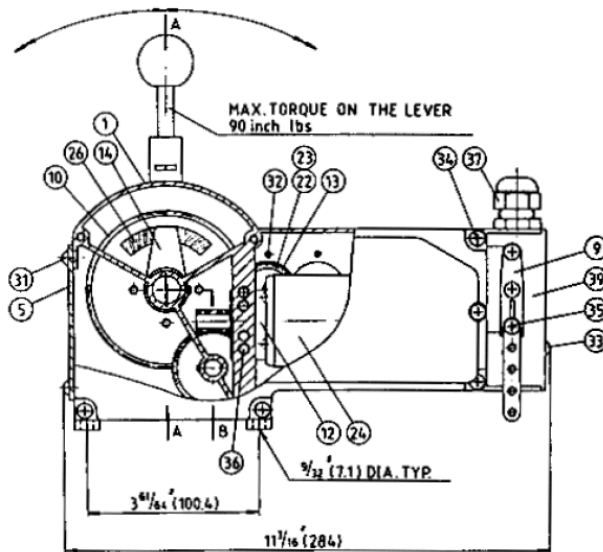


External Trim Potentiometers

The unit is constructed in bronze with stainless steel hardware. It is not, however, hermetically sealed and should be installed where it is not directly exposed to salt water spray.

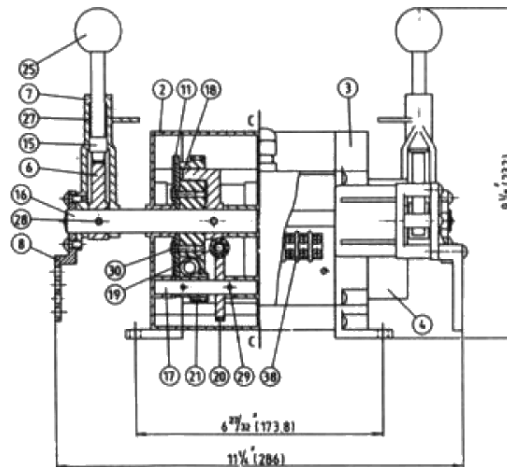
Dimensions and Parts

Side View



Model 6524 Electronic Actuator

Front View



ALL DIMENSIONS IN INCHES (MM)

ITEM	QUANTITY	PART NUMBER	DESCRIPTION
1	1	6524-0001	Centre Housing
2	1	6524-0002	Side Housing
3	1	6524-0003	Side Housing
4	2	6524-0004	Cover
5	1	6524-0005	Front Cover
6	2	6524-0006	Disconnect Cam
7	2	6524-0007	Disconnect Arm
8	2	6524-0008	Swing Arm
9	2	6524-0009	Stationery Arm
10	2	6524-0010	Gear
11	2	6524-0011	Gear
12	2	6524-0012	Bracket
13	2	6524-0013	Potentiometer Bracket
14	2	6524-0014	Torque Arm
15	2	6524-0015	Handle
16	2	6524-0016	Shaft
17	2	6524-0017	Shaft
18	2	6524-0018	Spring Retainer
19	2	6524-0019	Worm Gear WF 24-1 Browning
20	2	6524-0020	Pinion Gear G1036 Boston or BWG 2440 Browning
21	2	6524-0021	Gear YA14 Boston or YSS 2014 Browning
22	2	6524-0022	Potentiometer Drive Gear
23	2*	6639S-001-502	Potentiometer 5K
24	2	14202C306	Motor Pittman 24VDC
25	2	2030-0011	Knob Black
26	2	1201-0196	Spring
27	2	1201-0140	Spring
28	4	1024-0818	Spring Pin

Model 6524 Electronic Actuator

ITEM	QUANTITY	PART NUMBER	DESCRIPTION
29	4	1024-0510	Spring Pin
30	8	1001-0808	Hex. Head M. Screw
31	8	1010-0806	Round Head Philip M. Screw
32	16	1012-0606	Pan Head Philip M. Screw
33	2	1012-0828	Pan Head Philip M. Screw
34	24	1010-0808	Round Head Philip M. Screw
35	2	1012-0820	Pan Head Philip M. Screw
36	4	1002-1010	Hex. Socket Head Cap Screw
37	1	6001-0249	Connecting Gland
38	1	6009-0008	Terminal Block
39	1	6524-0024	Cover

* Quantity may vary.