

Model 6508 Illuminated Electronic Control



The 6508 is illuminated, but not water tight. This unit must be protected from the elements. The 6508 can be equipped with two potentiometers per handle. This will give redundancy in the electronic control system. The microprocessor will read the two potentiometers at all times and if the microprocessor considers one of them defective, it will ignore it and read the intact potentiometer only.

The unit is constructed entirely in bronze and stainless steel. The key pad & lights are waterproof. However the underside is NOT hermetically sealed.

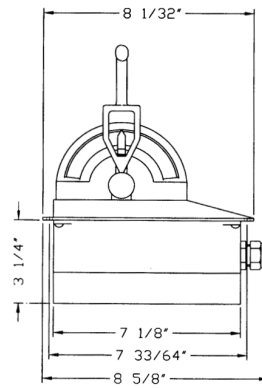
Ordering Information

Available in:

- Black epoxy
- Chrome Plated

Dimensions and Parts

Side View



Front View

