



## 5028-CM Air/Spring Applied Combination Brake Caliper

Material Die cast silicon bronze with stainless steel hardware and steel studs  
Weight 345 lb (156.5 kg)

The 5028-CM brake caliper is operated by a heavy duty industrial type dual-function brake actuator which can provide reliability and precision in the braking operation.

In the upper chamber of the actuator pot, air pressure is required to overcome the spring pressure to put the brake into a released position. In the absence of air pressure, the spring will provide the necessary force for emergency braking. The upper spring can only provide slightly more than half of the brake force.

In the lower portion, modulated air pressure is applied to the diaphragm against a light spring for the normal braking action. The combination of these actions results in a sensitive and precise braking operation on varying control air pressures.

The wedge mechanism consists of a wedge and rollers that force the levers apart thus applying pressure to the brake disc and give a very accurate control over the brake torque.

Total clamping force	48360 lb. (21935 kg)
Total lining area	420 in <sup>2</sup> (2710 cm <sup>2</sup> )
Allowable lining wear	0.5 in. (12.7 mm)
Max. air pressure	100 psi (690 kPa)
Disc max. thickness	4 in. (102 mm)
Required disc face	10 in. (254 mm)

### KOBELT Disc – 4" (102 mm)

Disc Dia. in. mm	42.5 (1080)	48.5 (1232)	54.5 (1384)	60.5 (1537)	72.0 (1829)	84.0 (2134)
Acting Rad. in. mm	16.0 (405)	19.0 (482)	22.0 (558)	25.0 (634)	30.5 (774)	36.5 (927)
Max. RPM	1300	1100	1000	900	700	600
* HP-sec (kW – hr)	54,000 (11.2)	69,000 (14.3)	78,000 (16.2)	86,000 (17.8)	128,000 (26.5)	163,000 (33.8)

Dimensions are in inches (mm). Specifications in metric units are shown in parentheses.

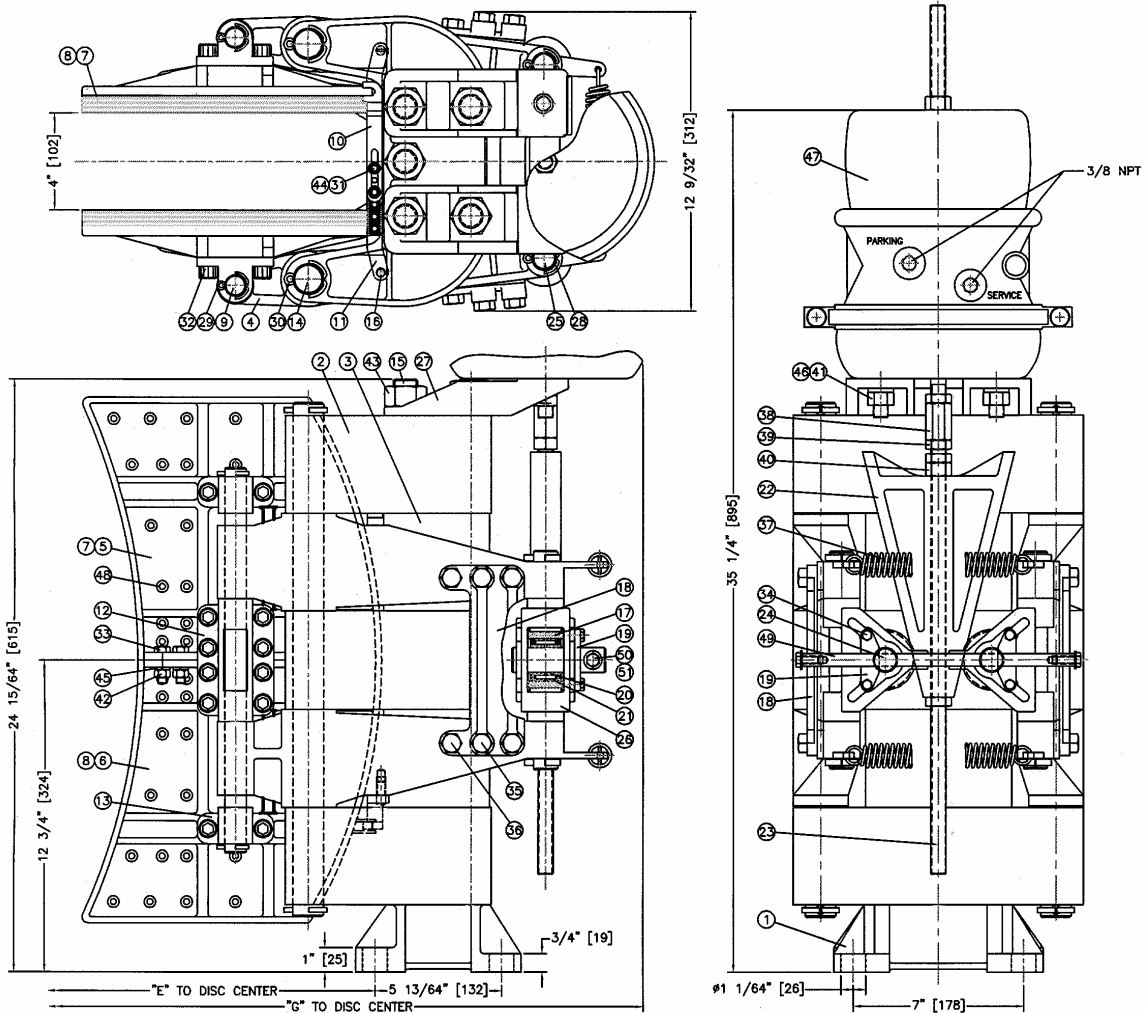
\* Figures are based on a continuous application of braking force.

Allowable values will be higher for one-stop applications where disc is allowed to cool between uses.

Refer to drawing on the back page.

Disc Diameter	42.5 (1080)	48.5 (1232)	54.5 (1384)	59.0 (1499)	60.5 (1537)
DIM "E"	21.0 (532)	24.0 (608)	27.0 (685)	29.2 (742)	30.0 (761)
DIM "G"	32.5 (826)	35.5 (902)	38.5 (978)	40.8 (1035)	41.5 (1054)

# Model 5028-CM



All Dimensions in inches (mm)

Item	Qty	Part Number	Description	Item	Qty	Part Number	Description
1	1	5028-0001	Foot	27	1	5028-0152	Mounting Bracket
2	3	5028-0002	Saddle	28	4	1026-1028	Cotter Pin
3	2	5028-0003	Spacer	29	4	1039-0352	Hitch Pin
4	4	5028-1004	Lever	30	4	1039-0470	Hitch Pin
5	2	5028-1005L	Shoe (left)	31	4	1002-1010	Socket Hd. Cap Screw
6	2	5028-1005R	Shoe (right)	32	24	1002-1420	Socket Hd. Cap Screw
7	2	5028-0007L	Lining (left)	33	10	1001-1220	Hex Head Cap Screw
8	2	5028-0007R	Lining (right)	34	4	1001-1010	Hex Head Cap Screw
9	2	5026-0028	Pin (Shoe)	35	8	1001-1424	Hex Head Cap Screw
10	2	5028-0011	Balancing Link No. 1	36	4	1001-1416	Hex Head Cap Screw
11	2	5028-0012	Balancing Link No. 2	37	2	1202-1010	Return Spring
12	2	5028-0013	Centre Bearing	38	1	5026-0025	Extension Nut
13	4	5028-0014	Outer Bearing	39	4	1022-0266	Jam Nut
14	2	5028-0022	Saddle Pin	40	1	1022-0166	Hex Nut
15	5	5028-0023	Tie Rod	41	2	1022-0116	Hex Nut
16	2	5028-0025	Link Pin	42	10	1022-0112	Hex Nut
17	2	5028-0031	Roller	43	5	1022-0123	Hex Nut
18	2	5028-0043	Lever Bracket	44	4	1023-0232	Flat Washer
19	2	5028-0044	Locking Plate	45	10	1023-0312	Lock Washer
20	2	5028-0045	Inner Bushing, IR-162020	46	2	1023-0316	Lock Washer
21	2	5028-0046	Outer Bearing HU-202820-2RS	47	1	3636	Actuator Pot
22	1	5028-0047	Wedge	48	124	1033-1007	Rivet
23	1	5028-0048	Extension Push Rod	49	1	5028-0053	Connection Pin
24	2	5028-0049	Roller Shaft	50	2	1023-0237	Flat Washer
25	2	5028-0050	Roller Guide Pin	51	2	1001-1112	Hex Head Cap Screw
26	2	5028-0051	Roller Box				