



2043 HEAVY DUTY SIDEMOUNT SINGLE LEVER CONTROL

The 2043 is a spin off from our Model 2044. The extremely heavy duty internal design of this unit allows for connection of 60 series cable for the control of small water jets and engine speed with a single lever. The control handle can be pulled out for overriding throttle. The output lever for the water jet bucket has an adjustable stroke (max 4") and can be adjusted to suit all small water jets. The throttle output lever has several attaching points for the cable with a stroke of up to 1 3/4".

Materials: Die cast silicon bronze and stainless steel hardware

Weight: 12 lbs. (5.5kg)

ORDERING INFORMATION

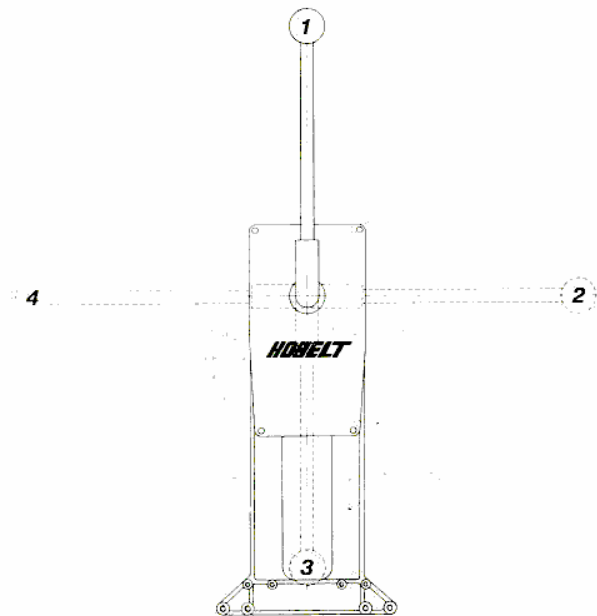
H - With one neutral safety switch.

K - With chrome finish cover and handle.

L - With polished brass finish cover and handle.

M - With black epoxy finish cover and chrome handle.

This control can be **ordered** (can not be changed in the field) with the neutral position of the handle in any one of the four positions indicated. Position "1" is standard. Please add appropriate number.



Example: 2043 control with chrome finish and the handle in the standard position the ordering number is: 2043-K1.

Note: If a neutral safety switch is required it should be ordered with the control. Later installation can be very difficult.

Each cable end attached to the control requires one connection kit which must be ordered separately.

BUCKET KITS:

Ordering No.

2043-0911 (40 series cable).

2043-0912 (60 series cable).

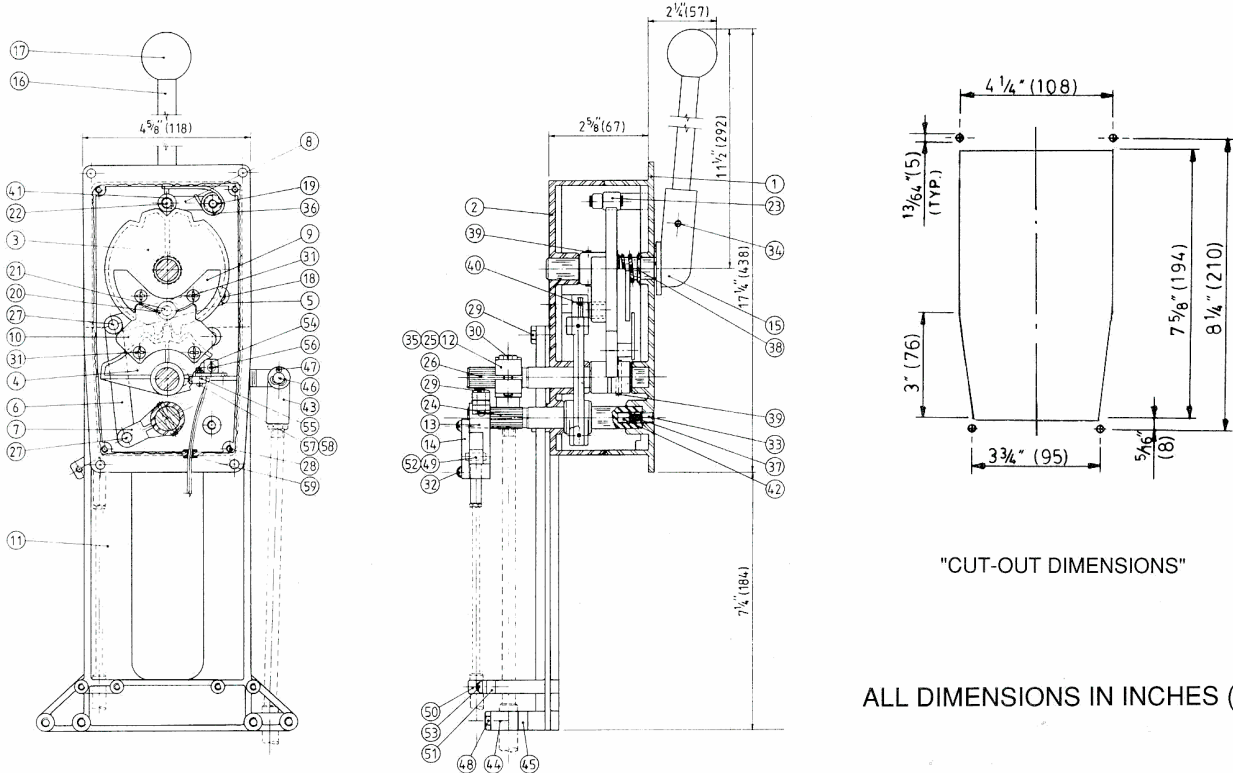
THROTTLE KITS:

Ordering No.

2043-0901 (30 series cable).

2043-0902 (40 series cable).

2043 DIMENSIONS AND PARTS LIST



ALL DIMENSIONS IN INCHES (MM)

ITEM QTY. PART NUMBER DESCRIPTION

1	1	2043 - 0004	Front Cover
2	1	2044 - 0002	Rear Cover
3	1	2044 - 0003	Center Cam
4	1	2044 - 0004	Clutch Gear
5	1	2044 - 0005	Link No.1
6	1	2044 - 0006	Link No.2
7	1	2044 - 0007	Throttle Link
8	1	2044 - 0008	Detent Lever
9	1	2044 - 0009	Cam Retainer
10	1	2044 - 0010	Clutch Retainer
11	1	2043 - 0001	Cable Support
12	1	2043 - 0002	Bucket Lever
13	1	2044 - 0012	Throttle Lever
14	1	2044 - 0013	Retainer Plate
15	1	2043 - 0014	Handle Hub
16	1	2043 - 0015	Handle Shaft
17	1	2030 - 0001	Knob
18	1	2044 - 0018	Solid Pin
19	1	2044 - 0019	Shoulder Bolt
20	1	2044 - 0020	Throttle Roller
21	1	2044 - 0021	Throttle Roller Pin
22	1	2044 - 0022	Snap Ring Pin
23	1	2044 - 0023	Detent Roller
24	1	2044 - 0024	Throttle Shaft
25	1	2043 - 0005	Adjusting Rod
26	1	2044 - 0025	Clutch Shaft
27	2	2044 - 0026	Solid Link Pin
28	4	1002 - 0812	Socket Hd. Screw
29	5	1001 - 1012	Hex. Hd. Screw
30	1	1001 - 1016	Hex. Hd. Screw
31	4	1009 - 0806	Flat Hd. Screw
32	2	1010 - 0808	Round Hd. Screw
33	1	1016 - 1204	Set Screw
34	1	1016 - 1004	Set Screw
35	1	1022 - 0264	Jam Nut
36	1	1205 - 0006	Spring
37	1	1201 - 0003	Spring
38	1	1201 - 0108	Spring
39	5	1024 - 0816	Spring Pin
40	3	1024 - 0508	Spring Pin
41	2	1029 - 1025	Snap Ring
42	1	2542 - 0008	Friction Pad
2043 - 0911 (40 SERIES) BUCKET CONNECTION KIT			
43	1	2043 - 0003A	Clevis
44	1	2108 - 0003	Clamp
45	1	2109 - 0004	Spacer
46	1	2043 - 0006	Pin
47	2	1026 - 0312	Cotter Pin
48	2	1001 - 1024	Hex. Hd. Screw
2043 - 0912 (60 SERIES) BUCKET CONNECTION KIT			
43	1	2043 - 0003B	Clevis
44	1	2108 - 0004	Clamp
45	1	2109 - 0004	Spacer
46	1	2043 - 0006	Pin
47	2	1026 - 0312	Cotter Pin
48	2	1001 - 1024	Hex. Hd. Screw
2043 - 0901 (30 SERIES) THROTTLE CONNECTION KIT			
49	1	2105 - 0001	Clevis
50	1	2108 - 0001	Clam
51	1	2109 - 0001	Spacer
52	1	1037 - 0411	Pin
53	2	1010 - 0810	Round Hd. Screw
2043 - 0902 (40 SERIES) THROTTLE CONNECTION KIT			
49	1	2105 - 0002	Clevis
50	1	2108 - 0002	Clamp
51	1	2109 - 0001	Spacer
52	1	1037 - 0411	Pin
53	2	1010 - 0816	Round Hd. Screw
2043 - 0903 NEUTRAL SAFETY SWITCH KIT			
54	1	2046 - 0028	Bracket
55	1	6001 - 1111	Microswitch
56	1	1006 - 0604	Pan Hd. Screw
57	2	1004 - 0208	Round Hd. Screw
58	2	1022 - 0102	Nut
59	1	6001 - 1325	Grommet