

## Model 2016 Stackable Flush Mount Control



This control, like all other Kobelt controls, is totally constructed in bronze and stainless steel.

Ease of installation and maintenance as well as adjustable detent and frictions make this product one outstanding. The levers can be combined to suit customer requirement and an almost unlimited variety of control functions can be accomplished.

The Model 2016 DOES NOT PROVIDE SINGLE LEVER CONTROL. Only ONE function can be accomplished per lever.

Because of the quality manufacture and engineering, we can again offer a five-year warranty on this product.

## Ordering Information

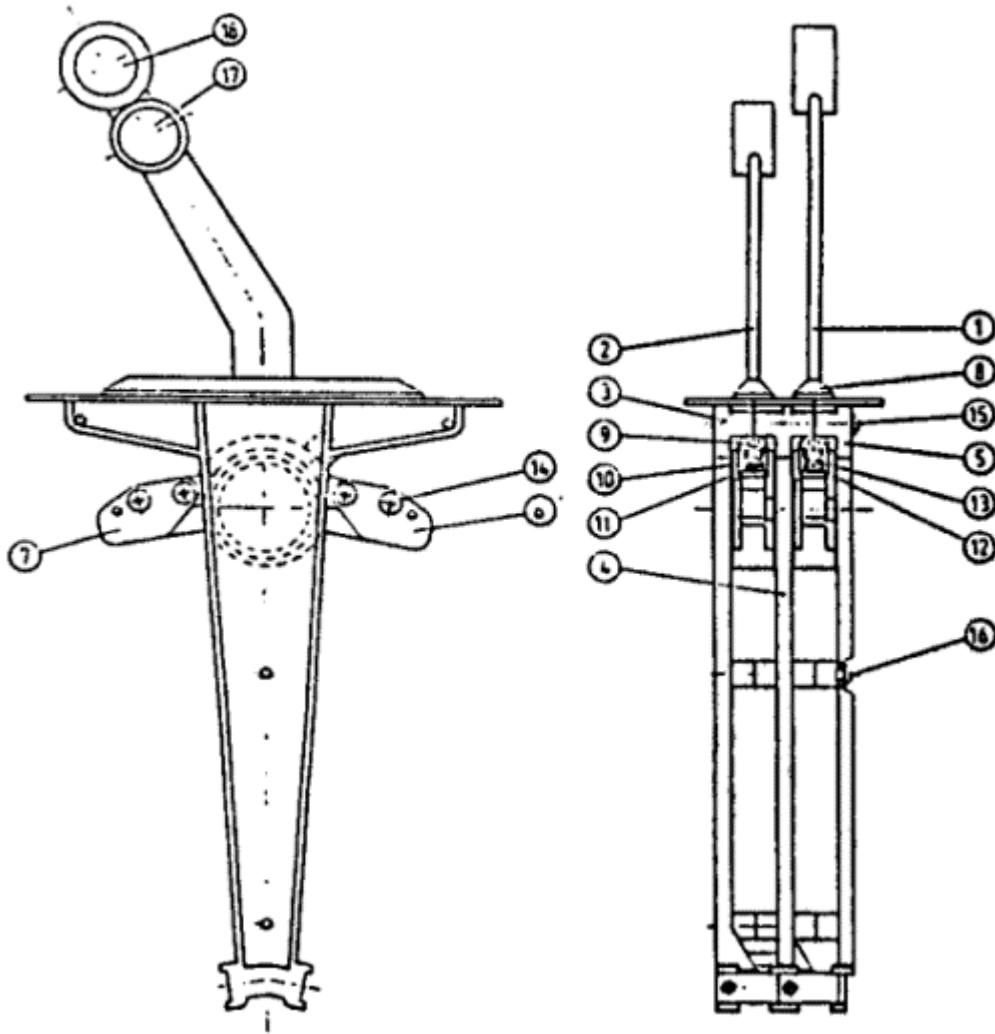
### Model Designations:

<b>A</b>	One short handle friction and one long handle detent.
<b>AI</b>	One short handle friction and one long handle friction.
<b>B</b>	Two long handles with detent on each handle.
<b>C</b>	Two long handles with friction on each handle.
<b>D</b>	Two long handles with one detent and one friction.
<b>E</b>	Two short handles with one detent on each handle.
<b>F</b>	Two short handles with friction on each handle.
<b>G</b>	Two short handles with one detent and one friction
<b>H</b>	With one neutral safety switch (on detented handle).

<b>J</b>	With two neutral safety switches.
<b>K</b>	With chrome finish cover and handle.
<b>L</b>	With polished bronze finish cover and handle
<b>M</b>	With black epoxy finish cover and chrome handle
<b>MM</b>	With black epoxy finish cover and handle(s).
<b>N</b>	One long handle with detent.
<b>O</b>	One long handle with friction.
<b>P</b>	One short handle with detent.
<b>R</b>	One short handle with friction.

## Dimensions and Parts

### Side and Front View

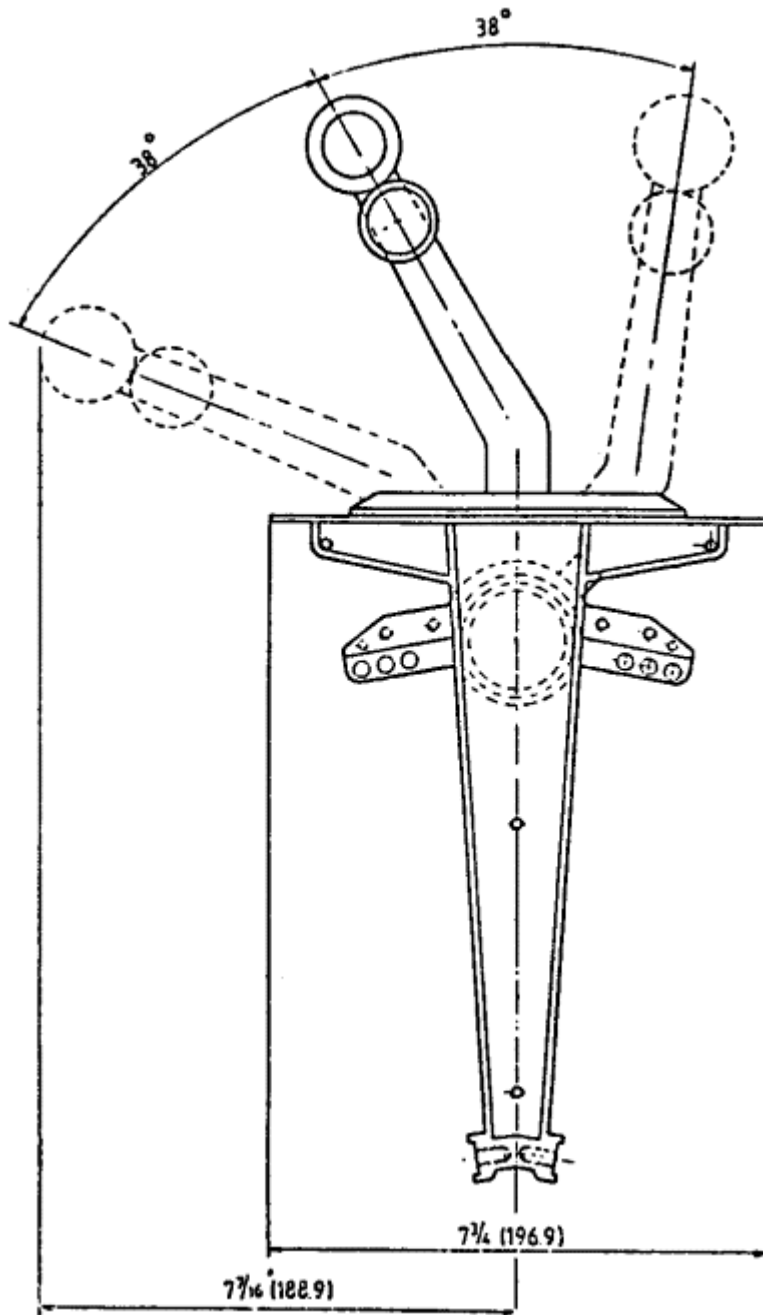


**ALL DIMENSIONS IN INCHES (MM)**

ITEM	QUANTITY	PART NUMBER	DESCRIPTION
1	1	2016-0001	Long Handle
2	1	2016-0002	Short Handle
3	1	2016-0003	End Support
4	1	2016-0004	Middle Support
5	1	2016-0005	End Support
6	1	2016-0006R	End Plate
7	1	2016-0006L	End Plate
8	2	2016-0008	Rubber Boot
9	2	1016-1204	Set Screw
10	1	1201-0002	Spring
11	1	2016-0011	Friction
12	1	2003-0011	Detent
13	1	1201-0003	Spring
14	4	1003-0808	Flat Head Screw
15	2	1004-0820	Round Head Screw (1 Handle)
15	2	1004-0836	Round Head Screw (2 Handle)
15	2	1004-0856	Round Head Screw (3 Handle)
15	2	1004-0872	Round Head Screw (4 Handle)
16	2	1004-0816	Round Head Screw (1 Handle)
16	2	1004-0832	Round Head Screw (2 Handle)
16	2	1004-0852	Round Head Screw (3 Handle)
16	2	1004-0868	Round Head Screw (4 Handle)
17	1	2016-0017RM	Red Insert Male
17	1	2016-0017RF	Red Insert Female
18	1	2016-0018BM	Black Insert Male
18	1	2016-0018BF	Black Insert Female

\* Quantity may vary.

**2016 Handle Travel**



## 2016 "Cut-Out" Dimensions

