

Model 2012 Heavy Duty 4" Stroke Two Handle Push Pull Control Head



The heavy-duty design of this control makes it ideal for the control of C.P. propellers, small water jets and small mechanical clutches requiring up to 4" of stroke. Two different types of handles are available; standard or handles with red or black plastic grips.

Features

- 5 year warranty
- Corrosion free die cast silicon bronze and stainless steel hardware
- 5 adjustable stroke ranges up to 4 inches
- Suitable for 30 Series and 40 Series Cables
- LARGE CENTER BEARING
- No Lost Motion
- High strength
- Low Wear and Long Life
- Removable dome for easy head and cable installation
- Independent friction and detent (standard) are adjustable and removable
- Operating quadrants are positively pin fastened to handle shaft for safety
- Suitable for series or parallel rigging
- Optional safety switch, which prevents engine starting unless control head is neutral (center) position, is available either pre-installed or in kit form
- Self-adhesive labels, instructions and a cutout template are included

Ordering Information

Model Designations:

A	One short handle with friction and one long handle with detent	*H	With one neutral safety switch
AA	One short handle with friction and one long handle with friction	I	Electric clutch adaptor
B	Two long handles with detent	*J	With two neutral safety switches
C	Two long handles with friction	K	With chrome finish cover and handles
D	Two long handles with one detent and one friction	L	With polished brass finish cover and handles
E	Two short handles with detent	M	With black epoxy finish cover and chrome handles
F	Two short handles with friction	V	With red or black plastic grips
G	Two short handles with one detent and one friction		

* Neutral Safety switch is normally installed with detented handle.

The standard Model 2012 control head is supplied as follows:

1. One short handle with friction and one long handle with detent
2. With chrome finish cover and handles
3. Without neutral safety switch

To order, state Model Number followed by the desired Model Designation letter codes:

Example

Standard 2012 control head. Ordering No. is 2012 AK

Note

Cable connector kits are ordered separately. Each Push Pull cable end attached to the control head requires one kit.

Ordering Numbers

2012 - 0901 Connection Kit (30 series cable)	2012 - 0902 Connection Kit (40 series cable)
2012 - 0903 Neutral Safety Switch Kit	2012 - 0910 Electric Clutch Kit

Weight

9.3 lb. (4.2 kg.)

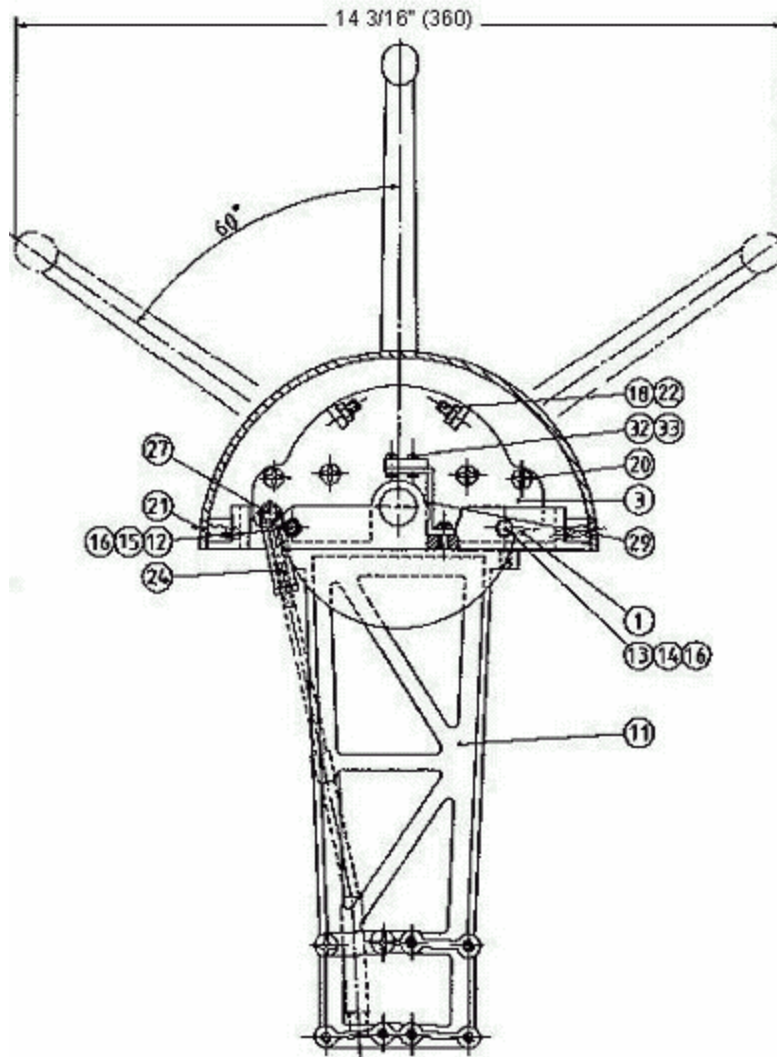
Patents

U.S. Patent Number 4280371

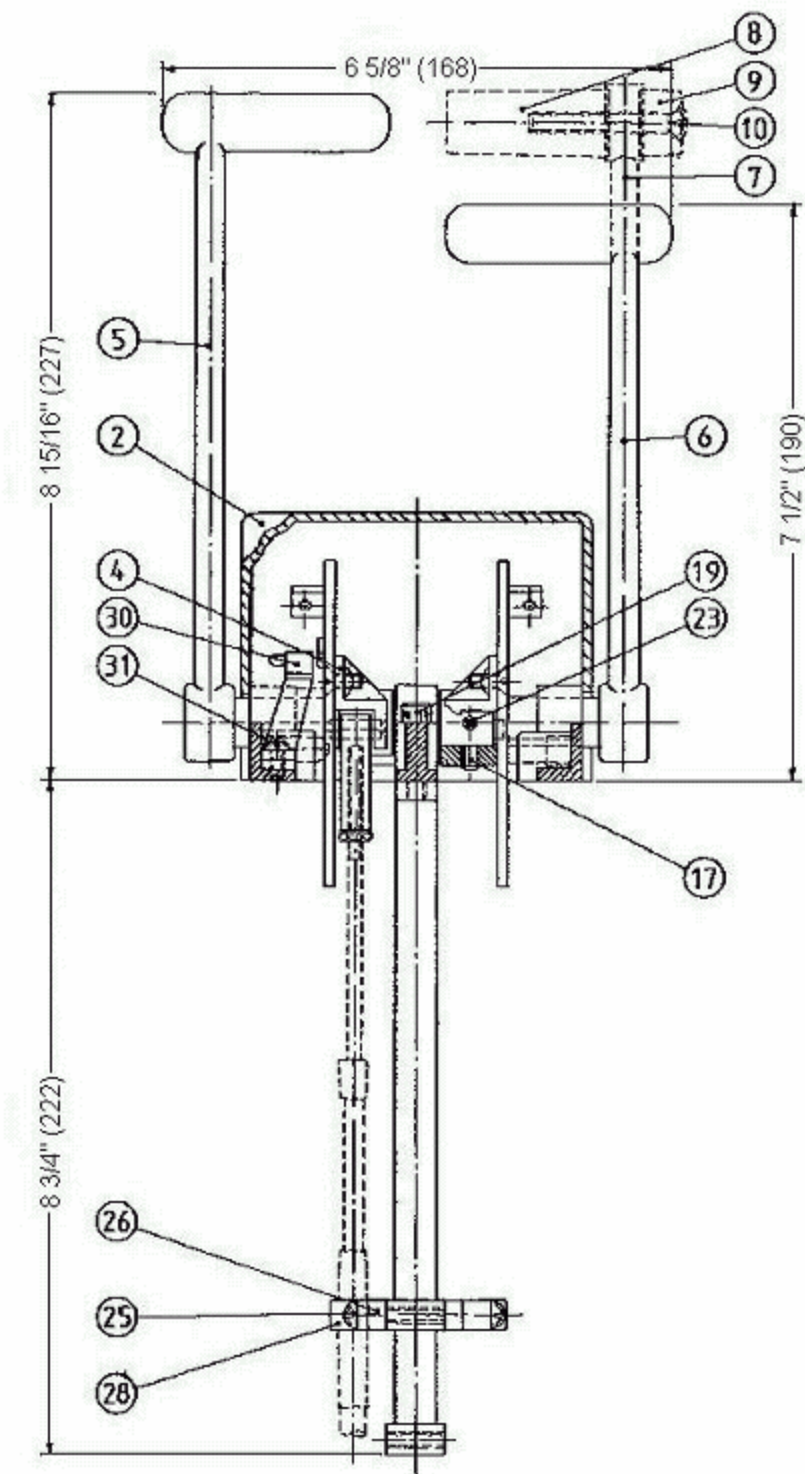
CAN. Patent Number 1158136

Dimensions and Parts

Side View



Front View



ALL DIMENSIONS IN INCHES (MM)

ITEM	QUANTITY	PART NUMBER	DESCRIPTION
1	1	2012-0001	Frame
2	1	2012-0002	Dome
3	2	2012-0005	Pivot Plate
4	2	2012-0006	Pin Retainer
5	*1	2011-0003	Long Handle (Standard)
6	*1	2011-2004	Short Handle (Standard)
7	*1	2011-2003	Long Handle (Plastic Grip)
7	*1	2011-2004	Short Handle (Plastic Grip)
8	*1	2111-0002B	Plastic Grip (Black)
8	*1	2111-0002R	Plastic Grip (Red)
9	*1	2111-0005B	Grip End (Black)
9	*1	2111-0005R	Grip End (Red)
10	*2	1011-1032	Oval Hd. Screw
11	1	2011-0008	Support
12	*1	2012-0007	Detent Pin
13	*1	2542-0008	Friction Pad
14	*1	1201-0002	Spring
15	*1	1201-0003	Spring
16	2	1016-1204	Setscrew
17	2	1016-1004	Setscrew
18	4	1016-0808	Setscrew
19	2	1002-1020	Socket Hd. Screw
20	8	1009-0808	Flat Hd. Screw
21	2	1005-0808	Oval Hd. Screw
22	4	1022-0108	Nut
23	4	1024-0816	Spring Pin

2012-0901 (30 SERIES) CONNECTION KIT

24	1	2105-0001	Clevis
25	1	2108-0001	Clamp
26	1	2109-0001	Spacer
27	1	1037-0411	Pin
26	2	1010-0810	Round Hd. Screw

2012-0902 (40 SERIES) CONNECTION KIT

24	1	2105-0002	Clevis
25	1	2108-0002	Clamp
26	1	2109-0001	Spacer
27	1	1037-0411	Pin
28	2	1010-0816	Round Hd. Screw

2012-0903 NEUTRAL SAFETY SWITCH KIT

29	1	2011-0007	Bracket
----	---	-----------	---------

Model 2012 Heavy Duty 4" Stroke Two Handle Push Pull Control Head

30	1	1901-0001	Microswitch
31	1	1010-0804	Round Hd. Screw
32	2	1004-0208	Round Hd. Screw
33	2	1022-0102	Nut

* Quantity may vary.

2012"Cut-Out" Dimensions

