

Model 2011 Heavy Duty, 3" Stroke Two Handle Push Pull Control Head



This control is available with three different handles; standard, handles with plastic grips or curved handles with knobs. An optional clutch and throttle interlock can be ordered with this unit. The purpose of this interlock is to prevent shifting, above engine idle. It is only available for systems having clutch and throttle on the same control. In two station applications only one interlock is required. For gears with an electric clutch, an adapter with two microswitches can be ordered.

Features

5 year limited warranty

Corrosion free die cast silicon bronze and stainless steel hardware

3 adjustable stroke ranges up to 3 inches

Suitable for 30 Series and 40 Series Cables

LARGE CENTER BEARING

No Lost Motion

High strength

Low Wear and Long Life

Removable dome for easy head and cable installation

Independent friction and detent (standard) are adjustable and removable

Operating quadrants are positively pin fastened to handle shaft for safety

Suitable for series or parallel rigging

Optional safety switch, which prevents engine starting unless control head is neutral (center) position, is available either pre -installed or in kit form

Self-adhesive labels, instructions and a cutout template are included

Ordering Information

Model Designations:

A	One short handle with friction and one long handle with detent	I	Electric clutch adaptor
AA	One short handle with friction and one long handle with friction	*J	With two neutral safety switches
B	Two long handles with detent	K	With chrome finish cover and handles
C	Two long handles with friction	L	With polished brass finish cover and handles
D	Two long handles with one detent and one friction	M	With black epoxy finish cover and chrome handles
E	Two short handles with detent	S	R.H. Model with interlock (gear on right side)
F	Two short handles with friction	T	L.H. Model with interlock (gear on left side)
G	Two short handles with one detent and one friction	V	With red or black plastic grips
*H	With one neutral safety switch		

* Neutral Safety switch is normally installed with detented handle.

The standard Model 2011 control head is supplied as follows:

1. One short handle with friction and one long handle with detent
2. With chrome finish cover and handles
3. Without neutral safety switch

To order, state Model Number followed by the desired Model Designation letter codes:

Example

Standard 2011 control head. Ordering No. is 2011 AK

Note

Cable connector kits are ordered separately. Each Push Pull cable end attached to the control head requires one kit.

Ordering Numbers

2011 - 0901 Connection Kit (30 series cable)
2011 - 0903 Neutral Safety Switch Kit

2011 - 0902 Connection Kit (40 series cable)
2011 - 0910 Electric Clutch Adaptor Kit

Weight

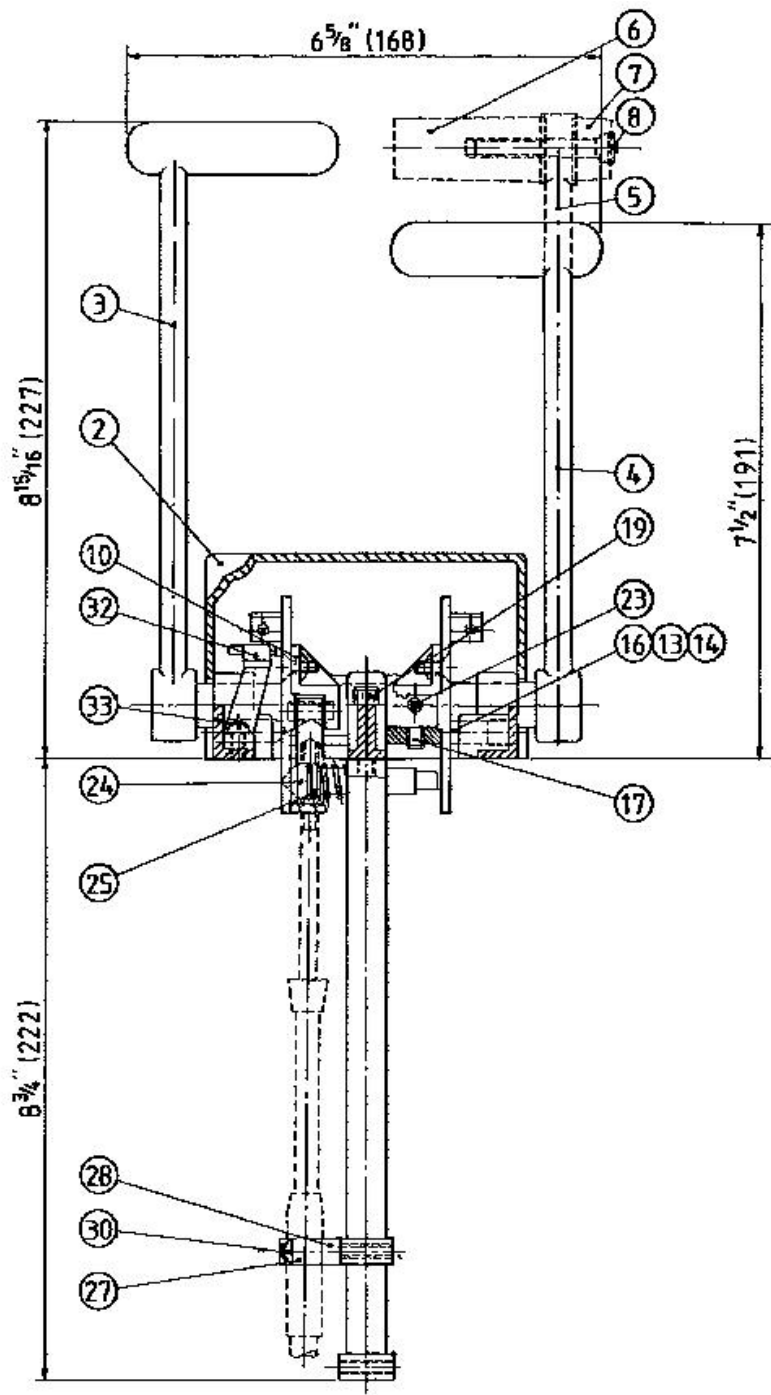
7.3 lb. (3.3 kg.)

Patents

U.S. Patent Number 4280371

CAN. Patent Number 1158136

Dimensions and Parts



Front View

ALL DIMENSIONS IN INCHES (MM)

ITEM	QUANTITY	PART NUMBER	DESCRIPTION
1	1	2011-0001	Frame

Model 2011 Heavy Duty, 3" Stroke Two Handle Push Pull Control Head

2	1	2011-0002	Dome
3	*1	2011-0003	Long Handle (Standard)
4	*1	2011-0004	Short Handle (Standard)
5	*1	2011-2003	Long Handle (Plastic Grip)
5	*1	2011-2004	Short Handle (Plastic Grip)
6	*1	2111-0002B	Plastic Grip (Black)
6	*1	2111-0002R	Plastic Grip (Red)
7	*1	2111-0005B	Grip End (Black)
7	*1	2111-0005R	Grip End (Red)
8	*2	1011-1032	Oval Hd. Screw
9	2	2011-0005	Pivot Plate
10	2	2011-0006	Pin Retainer
11	1	2011-0008	Support
12	*1	2012-0007	Detent Pin
13	*1	2542-0008	Friction Pad
14	*1	1201-0002	Spring
15	*1	1201-0003	Spring
16	2	1016-1204	Setscrew
17	2	1016-0804	Setscrew
18	4	1016-0808	Setscrew
19	2	1002-1020	Socket Hd. Screw
20	4	1009-0808	Flat Hd. Screw
21	2	1005-0808	Oval Hd. Screw
22	4	1022-0108	Nut
23	4	1024-0816	Spring Pin

OPTIONAL INTERLOCK

24	1	2011-0022	Interlock Pin
25	1	1201-0005	Spring

2011-0901 (30 SERIES) CONNECTION KIT

26	1	2105-0001	Clevis
27	1	2108-0001	Clamp
28	1	2109-0001	Spacer
29	1	1037-0411	Pin
30	2	1010-0810	Round Hd. Screw

2011-0902 (40 SERIES) CONNECTION KIT

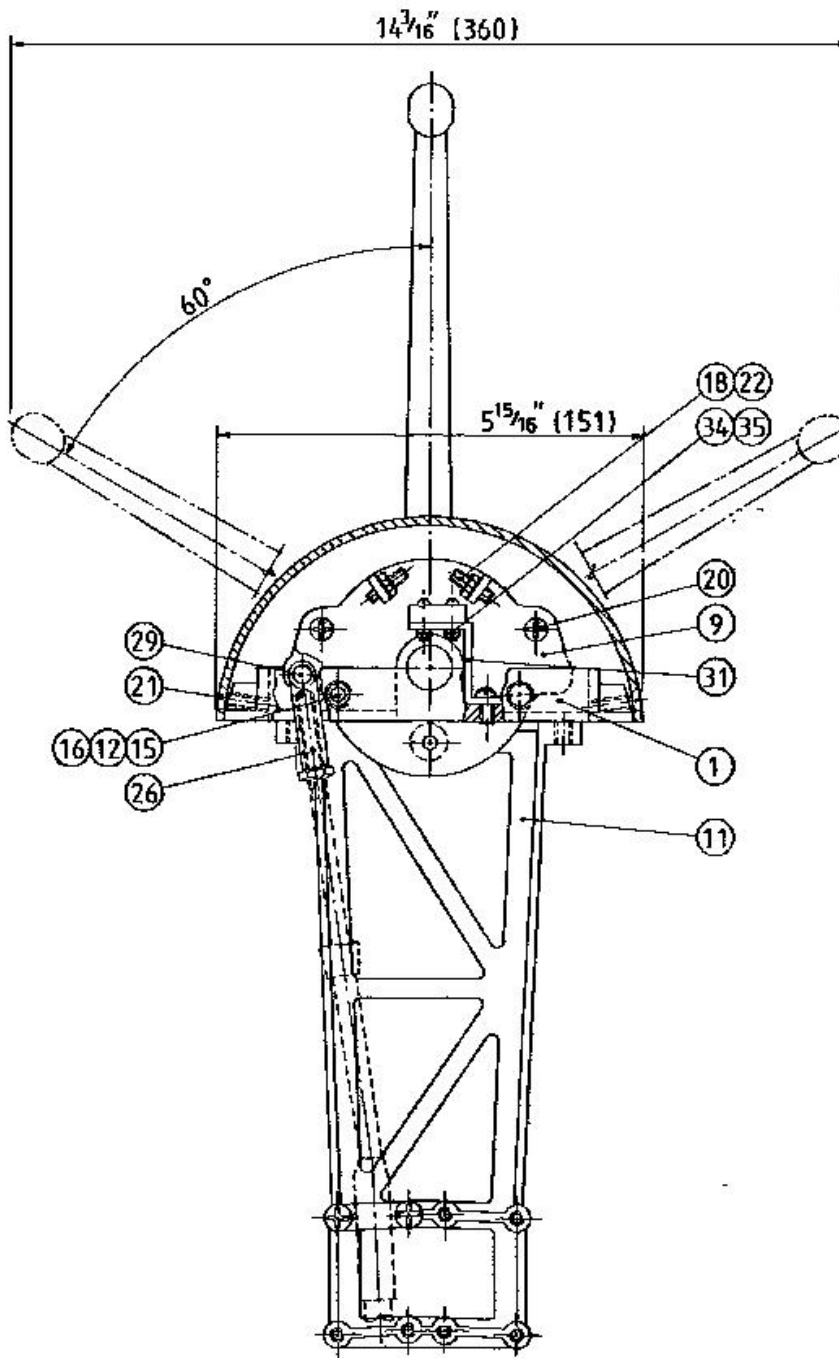
26	1	2105-0002	Clevis
27	1	2108-0002	Clamp
28	1	2109-0001	Spacer
29	1	1037-0411	Pin
30	2	1010-0816	Round Hd. Screw

2011-0903 NEUTRAL SAFETY SWITCH KIT

31	1	2011-0007	Bracket
32	1	1901-0001	Microswitch
33	1	1010-0804	Round Hd. Screw
34	2	1004-0208	Round Hd. Screw
35	2	1022-0102	Nut

* Quantity may vary.

Side View



ALL DIMENSIONS IN INCHES (MM)

ITEM	QUANTITY	PART NUMBER	DESCRIPTION
1	1	2011-0001	Frame
2	1	2011-0002	Dome
3	*1	2011-0003	Long Handle (Standard)
4	*1	2011-0004	Short Handle (Standard)
5	*1	2011-2003	Long Handle (Plastic Grip)
5	*1	2011-2004	Short Handle (Plastic Grip)
6	*1	2111-0002B	Plastic Grip (Black)
6	*1	2111-0002R	Plastic Grip (Red)
7	*1	2111-0005B	Grip End (Black)
7	*1	2111-0005R	Grip End (Red)
8	*2	1011-1032	Oval Hd. Screw
9	2	2011-0005	Pivot Plate
10	2	2011-0006	Pin Retainer
11	1	2011-0008	Support
12	*1	2012-0007	Detent Pin
13	*1	2542-0008	Friction Pad
14	*1	1201-0002	Spring
15	*1	1201-0003	Spring
16	2	1016-1204	Setscrew
17	2	1016-0804	Setscrew
18	4	1016-0808	Setscrew
19	2	1002-1020	Socket Hd. Screw
20	4	1009-0808	Flat Hd. Screw
21	2	1005-0808	Oval Hd. Screw
22	4	1022-0108	Nut
23	4	1024-0816	Spring Pin

OPTIONAL INTERLOCK

24	1	2011-0022	Interlock Pin
25	1	1201-0005	Spring

2011-0901 (30 SERIES) CONNECTION KIT

26	1	2105-0001	Clevis
27	1	2108-0001	Clamp
28	1	2109-0001	Spacer
29	1	1037-0411	Pin
30	2	1010-0810	Round Hd. Screw

2011-0902 (40 SERIES) CONNECTION KIT

26	1	2105-0002	Clevis
27	1	2108-0002	Clamp
28	1	2109-0001	Spacer
29	1	1037-0411	Pin

30	2	1010-0816	Round Hd. Screw
----	---	-----------	-----------------

2011-0903 NEUTRAL SAFETY SWITCH KIT

31	1	2011-0007	Bracket
32	1	1901-0001	Microswitch
33	1	1010-0804	Round Hd. Screw
34	2	1004-0208	Round Hd. Screw
35	2	1022-0102	Nut

* Quantity may vary.

2011 "Cut-Out" Dimensions

